

**EROSION CONTROL MAINTENANCE:**

- ALL EROSION AND SEDIMENT CONTROL MEASURES WILL BE CHECKED FOR STABILITY AND OPERATION FOLLOWING EVERY RUNOFF-PRODUCING RAINFALL, BUT IN NO CASE LESS THAN ONCE EVERY WEEK AND WITHIN 24 HOURS OF EVERY HALF INCH RAINFALL.
- ALL POINTS OF EGRESS WILL HAVE CONSTRUCTION ENTRANCES/EXITS THAT WILL BE PERIODICALLY TOP-DRESSED WITH 2-3" COARSE STONE TO MAINTAIN 6" THICKNESS. ENTRANCES/EXITS WILL BE MAINTAINED IN A CONDITION TO PREVENT MUD OR SEDIMENT FROM LEAVING THE SITE. IMMEDIATELY REMOVE OBJECTIONABLE MATERIAL SPILLED, WASHED, OR TRACKED ONTO THE CONSTRUCTION ENTRANCE/EXIT OR PUBLIC ROADWAYS. (NCDENR PRACTICE 6.06)
- SEDIMENT WILL BE REMOVED FROM BEHIND THE SEDIMENT FENCE WHEN IT BECOMES HALF-FILLED. THE SEDIMENT FENCE WILL BE REPAIRED AS NECESSARY TO MAINTAIN A BARRIER. STAKES MUST BE STEEL. STAKE SPACING WILL BE 6 FEET MAX. WITH THE USE OF EXTRA STRENGTH FABRIC, WITHOUT WIRE BACKING. STAKE SPACING WILL BE 8 FEET MAX. WHEN STANDARD STRENGTH FABRIC AND WIRE BACKING ARE USED. IF ROCK FILTERS ARE DESIGNED AT LOW POINTS IN THE SEDIMENT FENCE THE ROCK WILL BE REPAIRED OR REPLACED IF IT BECOMES HALF FULL OF SEDIMENT, NO LONGER DRAINS AS DESIGNED OR IS DAMAGED. (NCDENR PRACTICE 6.62)
- SEDIMENT WILL BE REMOVED FROM HARDWARE CLOTH AND GRAVEL INLET PROTECTIONS WHEN THE SEDIMENT REACHES HALF OF THE DEPTH TO THE TOP OF THE ROCK. ROCK WILL BE CLEANED OR REPLACED WHEN THE SEDIMENT CONTROL MEASURE NO LONGER DRAINS AS INTENDED. REMOVE DEBRIS FROM THE ROCK AS NECESSARY TO ALLOW FOR PROPER DRAINAGE. (NCDENR PRACTICES 6.51)
- ALL SEEDING AREAS WILL BE FERTILIZED, RE-SEEDING AS NECESSARY AND MULCHED ACCORDING TO SPECIFICATIONS IN THE VEGETATIVE PLAN TO MAINTAIN A VIGOROUS, DENSE VEGETATIVE COVER. THE ANGLE FOR GRADED SLOPES AND FILLS SHALL BE NO GREATER THAN THE ANGLE THAT CAN BE RETAINED BY VEGETATIVE COVER OR OTHER ADEQUATE EROSION CONTROL DEVICES OR STRUCTURES. IN ANY EVENT, SHORT, FLAT SLOPES (FLATTER THAN 3:1 AND LESS THAN 50') LEFT EXPOSED WILL, WITHIN 14 CALENDAR DAYS OF COMPLETION OF ANY GRADING, BE PLANTED OR OTHERWISE PROVIDED WITH TEMPORARY OR PERMANENT GROUND COVER, DEVICES, OR STRUCTURES SUFFICIENT TO RESTRAIN EROSION. ALL OTHER AREAS SHOULD BE STABILIZED WITHIN 7 DAYS AFTER ANY PHASE OF ACTIVITY.
- SEDIMENT WILL BE REMOVED FROM SEDIMENT BASINS WHEN THE DESIGNED STORAGE CAPACITY HAS BEEN HALF-FILLED WITH SEDIMENT. PULL SKIMMER TO ONE SIDE SO THAT SEDIMENT UNDERNEATH CAN BE REMOVED. SKIMMERS MUST BE CHECKED FOR BLOCKAGES AND DEBRIS REMOVAL, AND MAY BE FLUSHED IF NECESSARY. BAFFLES WILL BE REPAIRED OR REPLACED IF THEY COLLAPSE, TEAR, DECOMPOSE, OR BECOME INEFFECTIVE. THEY WILL BE REPLACED PROMPTLY. SEDIMENT WILL BE REMOVED WHEN DEPOSITS REACH HALF THE HEIGHT OF THE FIRST BAFFLE. (NCDENR PRACTICES 6.60, 6.64, & 6.65)
- SEDIMENT STORAGE BAGS SHALL BE REMOVED ONCE 1/2-CAPACITY IS REACHED. SEDIMENT BAGS SHALL BE DISPOSED OF PROPERLY IN A LANDFILL OR BROKEN ON-SITE FOR BACKFILL. BAGS SHALL BE LIFTED CAREFULLY ACCORDING TO MANUFACTURER'S RECOMMENDATIONS SO THAT BAGS ARE NOT TORN IN-PLACE AND SEDIMENT IS NOT RELEASED OFF-SITE OR DOWNSTREAM.

**PHASE 2 CONSTRUCTION SEQUENCE:**

- INSTALL PROPOSED STORM DRAINAGE THROUGHOUT PROJECT SITE. ALL STORM DRAINAGE PIPING TO BE CLASS III RCP OR HOPE, UNLESS OTHERWISE NOTED.
- INSTALL INLET PROTECTION AROUND STORM INLETS.
- COMPACT ALL FILL AREAS TO 95% STD. PROCTOR MAXIMUM DRY DENSITY.
- INSTALL UTILITIES, POUR CONCRETE FOR BUILDING PADS. PLACE ASPHALT FOR PARKING AND ROADWAYS.
- INSTALL LANDSCAPING AS SHOWN ON CL-101 & CL-102 AND ESTABLISH FINAL GRADES AS SHOWN ON CG-101 & CG-102.
- INSTALL PERMANENT SEEDING.
- REMOVE ALL SEDIMENT FROM ALL STORM DRAIN PIPES. CONTRACTOR TO PERFORM ANY NECESSARY GRADING TO CLEAR TEMPORARY SEDIMENT BASINS OF SEDIMENT AND CONVERT TO PERMANENT INFILTRATION BASINS.
- SILT FENCE MUST REMAIN INSTALLED AND FUNCTIONING PROPERLY UNTIL THE LIMITS OF CONSTRUCTION HAVE BEEN PERMANENTLY STABILIZED.

**LIMITS OF DISTURBANCE - 11.28 AC**

**LEGEND**

- SF SILT FENCE
- LOD LIMITS OF DISTURBANCE
- TPF TREE PROTECTION FENCING
- DBA DRAINAGE BASIN AREA

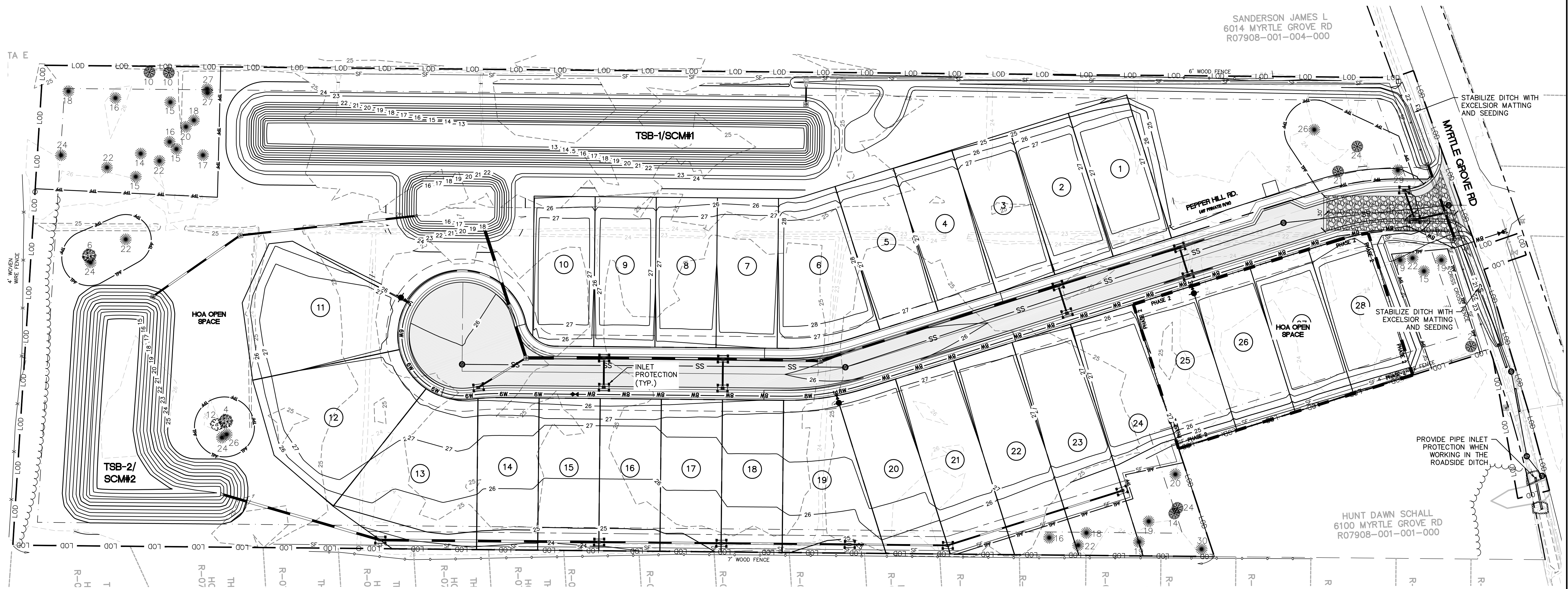
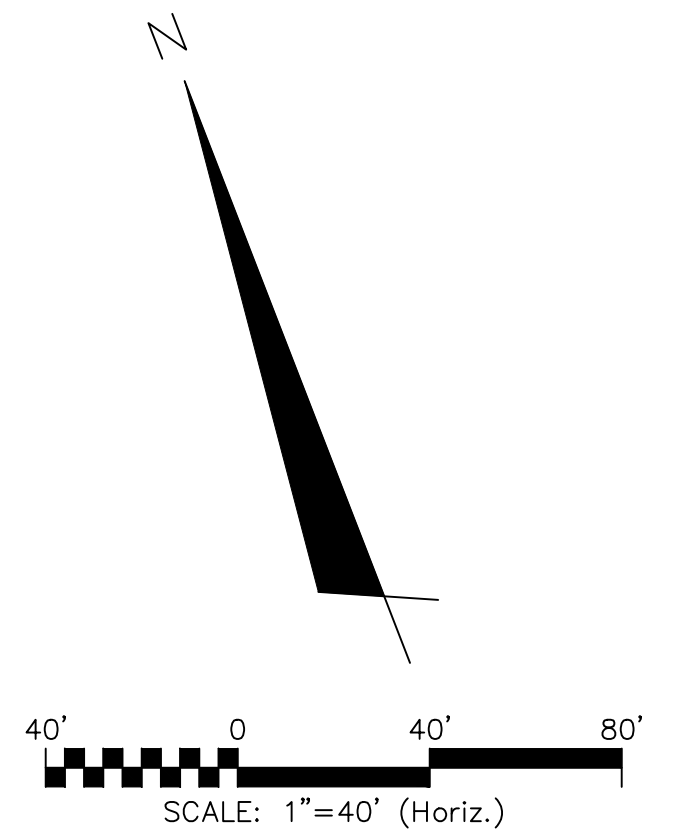
**EROSION CONTROL NOTES:**

- CLEAR AND REMOVE FROM SITE ALL TREES, SHRUBS, ROOTS, ROOT MAT, ETC. FROM THE AREA WITHIN DESIGNATED CLEARING LIMITS. DO NOT DISTURB INSIDE TREE PROTECTION FENCING.
- CONTRACTOR SHALL BE RESPONSIBLE FOR CLEANING AND RESTORING TO PRE-CONSTRUCTION CONDITIONS ANY AREAS OUTSIDE THE PROJECT LIMITS THAT MAY INADVERTENTLY BE DAMAGED DUE TO THE FAILURE OF THE EROSION MEASURES DURING GRADING AND AFTER GRADING HAS BEEN COMPLETED.
- CONTRACTOR SHALL CONTINUE TO MAINTAIN PERMANENT AND TEMPORARY EROSION CONTROL MEASURES UNTIL FINAL INSPECTION AND APPROVAL BY NEW HANOVER COUNTY ENGINEERING, IF REQUIRED.
- PRIOR TO ANY CLEARING, GRADING OR CONSTRUCTION ACTIVITY, TREE PROTECTION FENCING SHALL BE INSTALLED AROUND PROTECTED TREES OR GROVES OF TREES AND NO TOOLS, STOCKPILES, MATERIALS, OR VEHICLES ARE PERMITTED WITHIN THE TREE PROTECTION FENCING.
- IF THE SAME PERSON CONDUCTS THE LAND-DISTURBING ACTIVITY & ANY RELATED BORROW OR WASTE ACTIVITY, THE RELATED BORROW OR WASTE ACTIVITY SHALL CONSTITUTE PART OF THE LAND-DISTURBING ACTIVITY UNLESS THE BORROW OR WASTE ACTIVITY IS REGULATED UNDER THE MINING ACT OF 1971, OR IS A LANDFILL REGULATED BY THE DIVISION OF WASTE MANAGEMENT. IF THE LAND-DISTURBING ACTIVITY AND ANY RELATED BORROW OR WASTE ACTIVITY ARE NOT CONDUCTED BY THE SAME PERSON, THEY SHALL BE CONSIDERED SEPARATE LAND-DISTURBING ACTIVITIES AND MUST BE PERMITTED EITHER THROUGH THE SEDIMENTATION POLLUTION CONTROL ACT AS A ONE-USE BORROW SITE OR THROUGH THE MINING ACT.
- CONTACT PERSON SHOULD ISSUES ARISE DURING EROSION AND SEDIMENT CONTROL OPERATION: VERNON POWELL
- ANY GRADING BEYOND THE DENUDED LIMITS SHOWN ON THE PLAN IS A VIOLATION OF THE COUNTY EROSION CONTROL ORDINANCE AND IS SUBJECT TO A FINE.
- GRADING MORE THAN ONE ACRE WITHOUT AN APPROVED EROSION CONTROL PLAN IS A VIOLATION OF STATE LAW AND IS SUBJECT TO A FINE.
- A GROUND COVER MUST BE PROVIDED ON EXPOSED SLOPES WITHIN 15 WORKING DAYS OR 21 CALENDAR DAYS (WHICHEVER IS SHORTER), FOLLOWING COMPLETION OF ANY PHASE OF GRADING, AND, A PERMANENT GROUND COVER FOR ALL DISTURBED AREAS WITHIN 10 WORKING DAYS OR 90 CALENDAR DAYS (WHICHEVER IS SHORTER) FOLLOWING COMPLETION OF CONSTRUCTION OR DEVELOPMENT.
- ADDITIONAL MEASURES TO CONTROL EROSION AND SEDIMENT MAY BE REQUIRED BY A REPRESENTATIVE OF NEW HANOVER COUNTY.
- SLOPES SHALL BE GRADED NO STEEPER THAN 3:1.
- ADDITIONAL DEVICES MAY BE REQUIRED AS AGREED UPON BY THE FIELD INSPECTOR, ENGINEER, AND OWNER.
- IF ACTIVE CONSTRUCTION CEASES IN ANY AREA FOR MORE THAN 15 WORKING DAYS OR 90 CALENDAR DAYS (WHICHEVER IS SHORTER), ALL DISTURBED AREAS MUST BE SEED, MULCHED, AND TACKED UNLESS WRITTEN APPROVAL IS GRANTED BY THE EROSION CONTROL OFFICER.
- PROJECT BOUNDARY DOES NOT CONTAIN ANY CAMA AREAS, 100-YR FLOODPLAIN, CONSERVATION OVERLAY DISTRICTS, AND PROJECT DISCHARGES OUTSIDE THE 575' HOW WATERSHED.

**SYMBOLS LEGEND**

- SF SILT FENCE
- LOD LIMITS OF DISTURBANCE
- PPL PROJECT PROPERTY LINE
- W EXISTING WATER LINE
- SS EXISTING SEWER LINE
- TP TREE PROTECTION FENCING
- IP INLET PROTECTION

NOTE: SEE SHEET CE-501 FOR SEDIMENT AND EROSION CONTROL DETAILS.



REVNO.	DESCRIPTIONS	DATE

SEAL

243 North Front Street  
Wilmington, North Carolina 28401  
Phone: (910)343-1048, Fax: (910)251-8282

NC LIC. No. F-1222  
www.mckimcreed.com

**PULTE HOME COMPANY, LLC**  
4000 FABER PLACE DRIVE, SUITE 110  
NORTH CHARLESTON, SC 29405

**PEPPER HILL**  
WILMINGTON  
NEW HANOVER COUNTY, NORTH CAROLINA

**EROSION CONTROL PHASE 2**

DATE: 7/19/17	SCALE: 1"=40'	MAC FILE NUMBER: CE-102
MCE PROJ. # 01096-0049	HORIZONTAL: 1"=40'	DRAWING NUMBER: 8
DRAWN: MAB	VERTICAL: N/A	
DESIGNED: MAB, N.J.L.		
CHECKED: N.J.L.		
PROJ. MGR.: N.J.L.		
STATUS: FINAL DESIGN ISSUED FOR PERMITTING		