

AMENITY AREA DATA

| | |
|--------------------------------------|---|
| PARCEL SIZE: | 58,245 SF (1.34 ACRE) |
| IMPERVIOUS AREA: | 18,213 SF (31%) |
| CLUBHOUSE AREA: | 2,725 SF |
| REQUIRED PARKING: | 27 SPACES (1 SPACE/100 SF) |
| PROPOSED PARKING: | 20 SPACES* INCLUDING 1 ADA PLUS 8 GOLF CART |
| *REQUEST REDUCTION OF 7 SPACES (25%) | |
| IMPERVIOUS AREA CALCS | |
| ON-SITE PARKING: | 7,645 SF |
| OFF-SITE PARKING: | 587 SF |
| ON-SITE C&G: | 571 SF |
| OFF-SITE C&G: | 92 SF |
| SIDEWALKS: | 1,150 SF |
| POOL DECK: | 4,700 SF |
| BUILDINGS: | 3,469 SF |
| TOTAL: | 18,213 SF |

Coastal Land Design, PLLC
 Civil Engineering / Landscape Architecture
 Land Planning / Construction Management
 NCBELS Firm License P-0369
 P.O. Box 1172 Phone: 910-254-9333
 Wilmington, NC 28402 Fax: 910-254-0502
 www.clddesign.com

"PRESERVATION POINT"
 New Hanover County, NC
 Amenity Area
 Site Plan/Utility Plan

| REV | DATE | DESCRIPTION | SL | INIT |
|-----|-----------|-------------------------------|----|------|
| 0 | 21 JAN 20 | INITIAL SITE PLAN APPLICATION | | |

DEVELOPER:
 Preservation Point Partners, LLC
 9827 Cogdill Rd, STE 1
 Knoxville, TN 37932

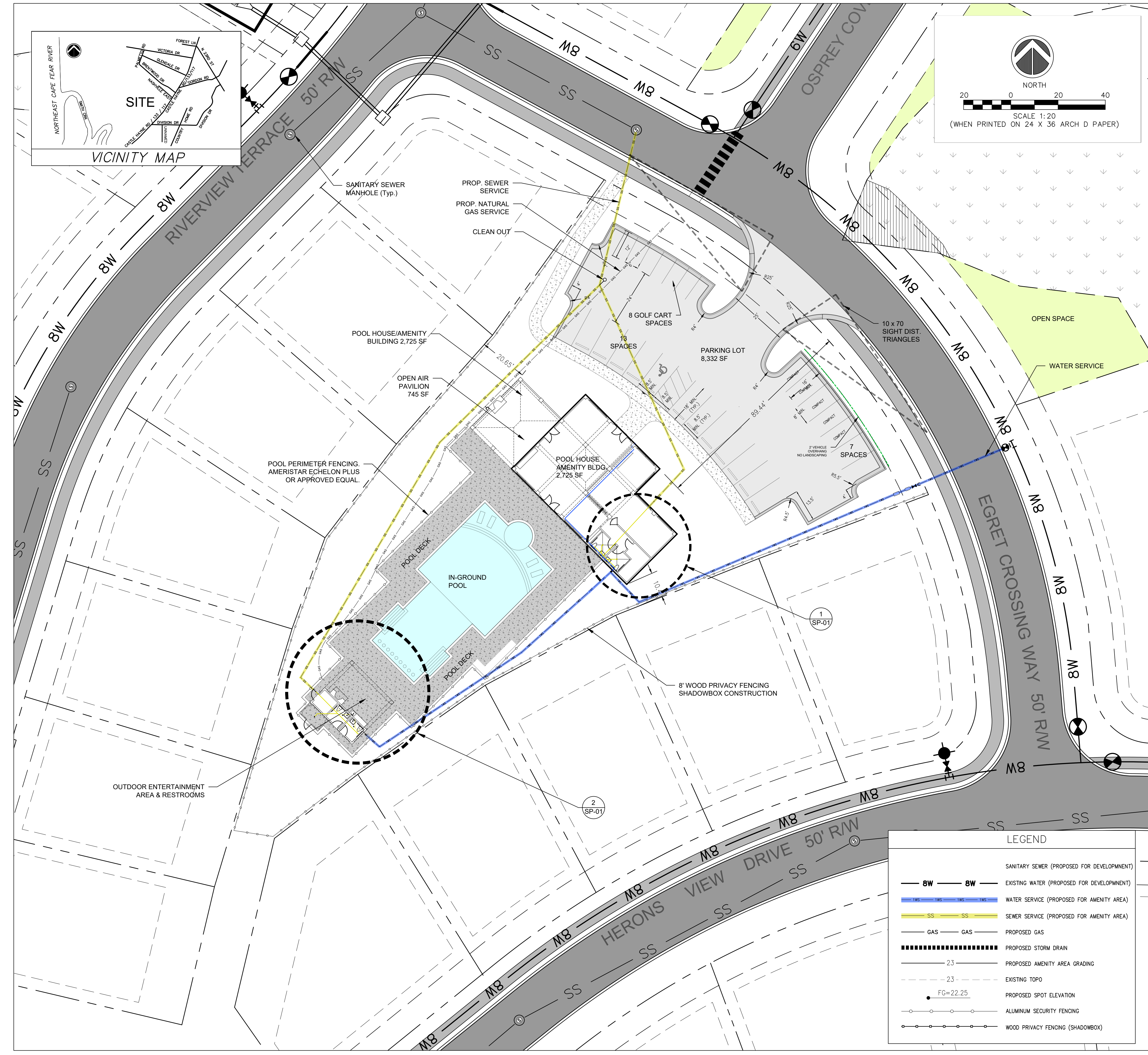
NOT RELEASED FOR CONSTRUCTION

ISSUED FOR AGENCY REVIEW ONLY

BEFORE YOU DIG, CALL
North Carolina 811
 www.nc811.org

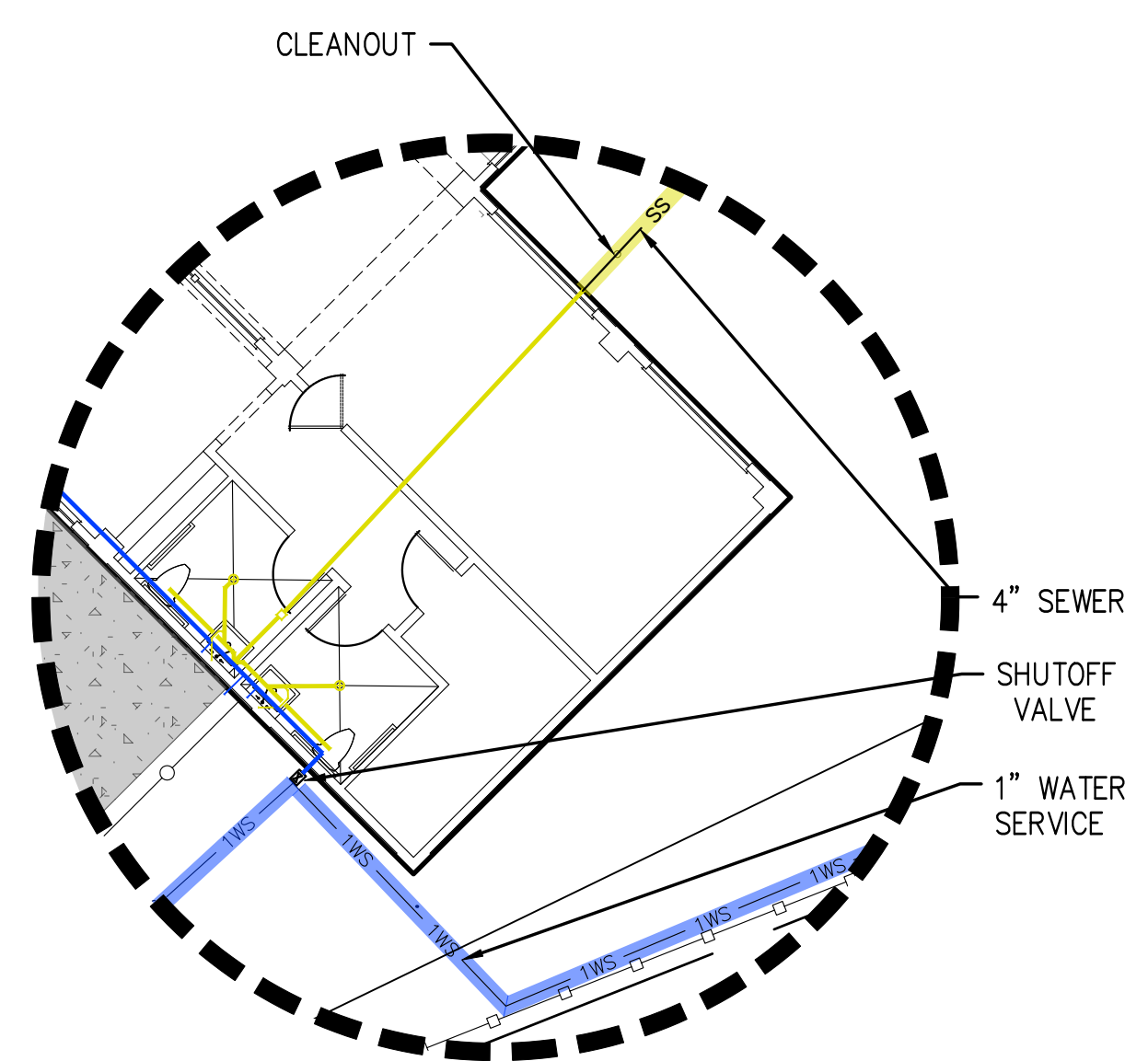
APPROVED: JFB PROJECT: 989-01
 CHECKED: JFB SCALE: 1" = 20'
 DESIGNED: JFB RELEASE: PLANNING

SHEET
SP-01

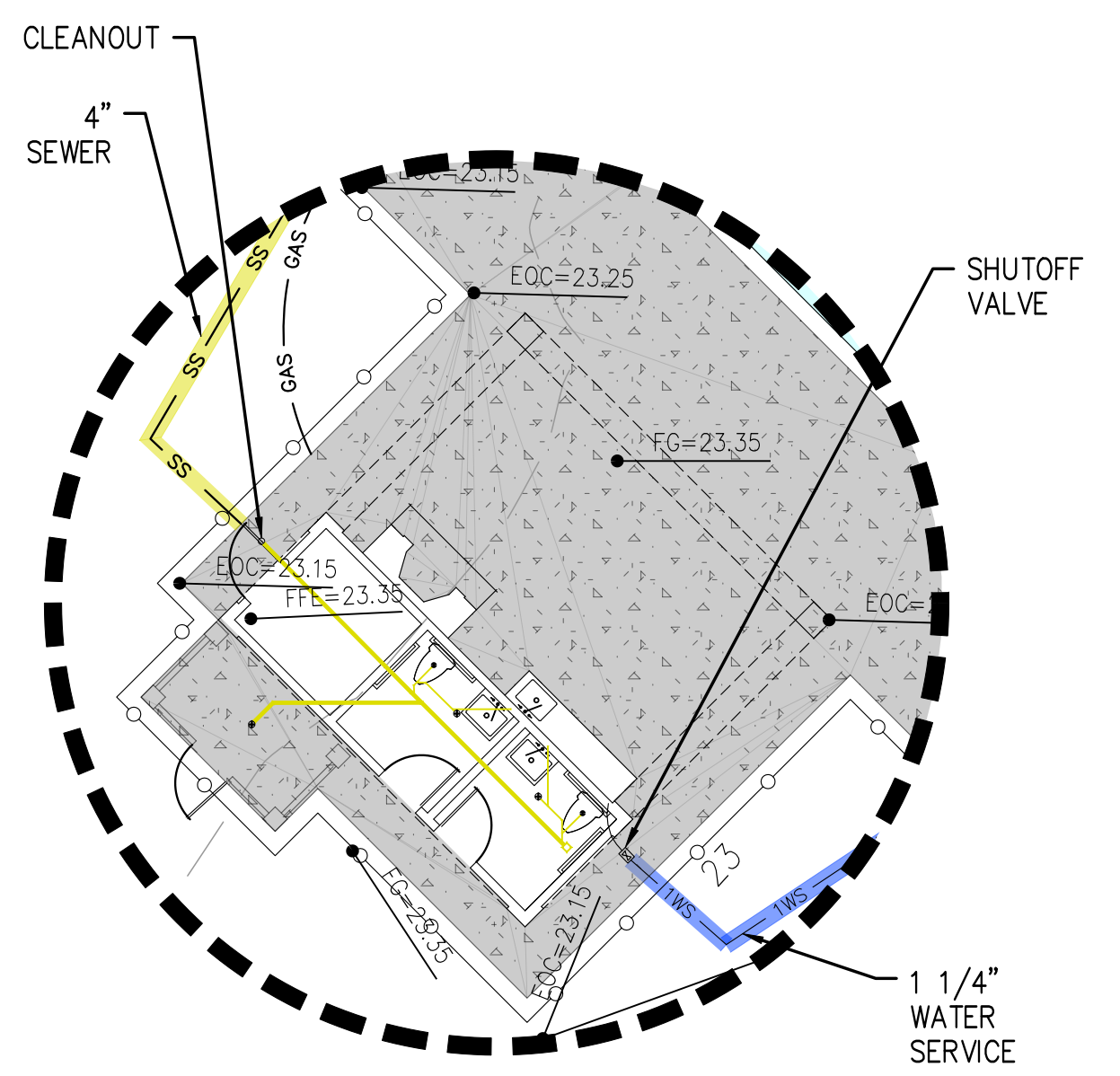


LEGEND

| | |
|---------------------|---|
| — 8W — 8W — | SANITARY SEWER (PROPOSED FOR DEVELOPMENT) |
| — 1 1/4" — 1 1/4" — | EXISTING WATER (PROPOSED FOR DEVELOPMENT) |
| — 4" — 4" — | WATER SERVICE (PROPOSED FOR AMENITY AREA) |
| — SS — SS — | SEWER SERVICE (PROPOSED FOR AMENITY AREA) |
| — GAS — GAS — | PROPOSED GAS |
| — — — | PROPOSED STORM DRAIN |
| — 23 — | PROPOSED AMENITY AREA GRADING |
| — 23 — | EXISTING TOPO |
| ● FG=22.25 | PROPOSED SPOT ELEVATION |
| — — — | ALUMINUM SECURITY FENCING |
| — — — | WOOD PRIVACY FENCING (SHADOWBOX) |



AMENITY CENTER UTILITY SERVICE ENLARGEMENT
 NOT TO SCALE (1 SP-01)



POOL HOUSE UTILITY SERVICE ENLARGEMENT
 NOT TO SCALE (2 SP-01)