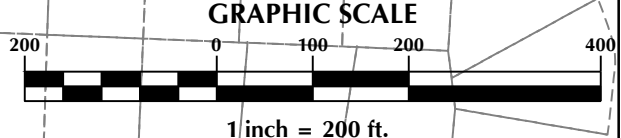
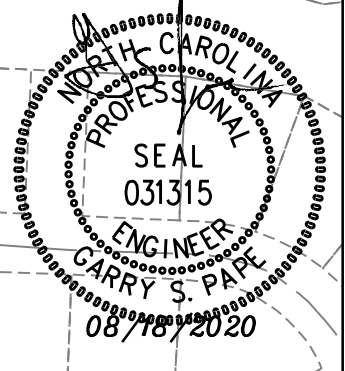


18 LOT
ADDITION



No.	Revision	Date	By

Designer	GSP	Scale	1" = 200'
Drawn By	GSP	Date	December 2017
License #	P-0718	Job No.	2017-0002

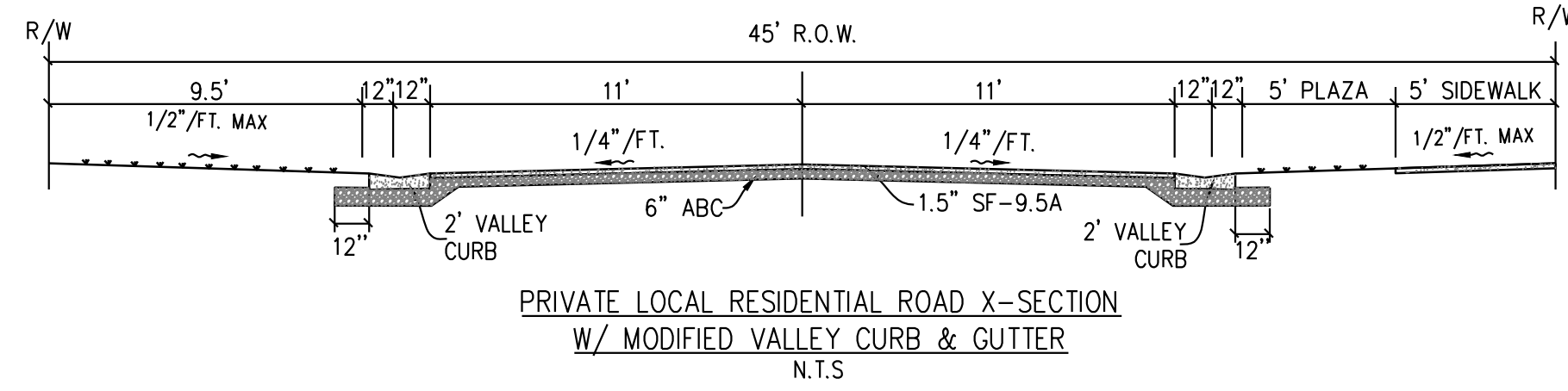
**THE LANDING
AT LEWIS CREEK ESTATES**
Wilmington New Hanover County North Carolina

OVERALL PRELIMINARY PLAN

PREPARED FOR:
McADAMS HOMES, LLC
6626-C GORDON ROAD
WILMINGTON, NC 28411
910-799-3006

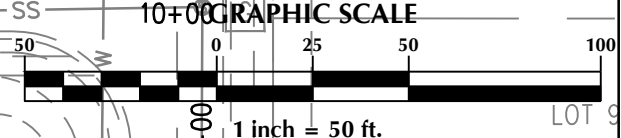
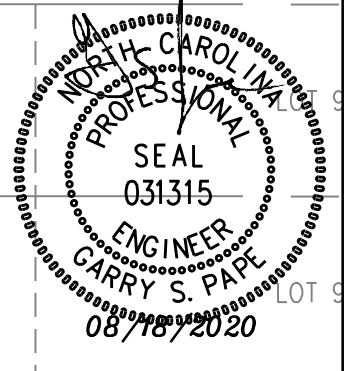
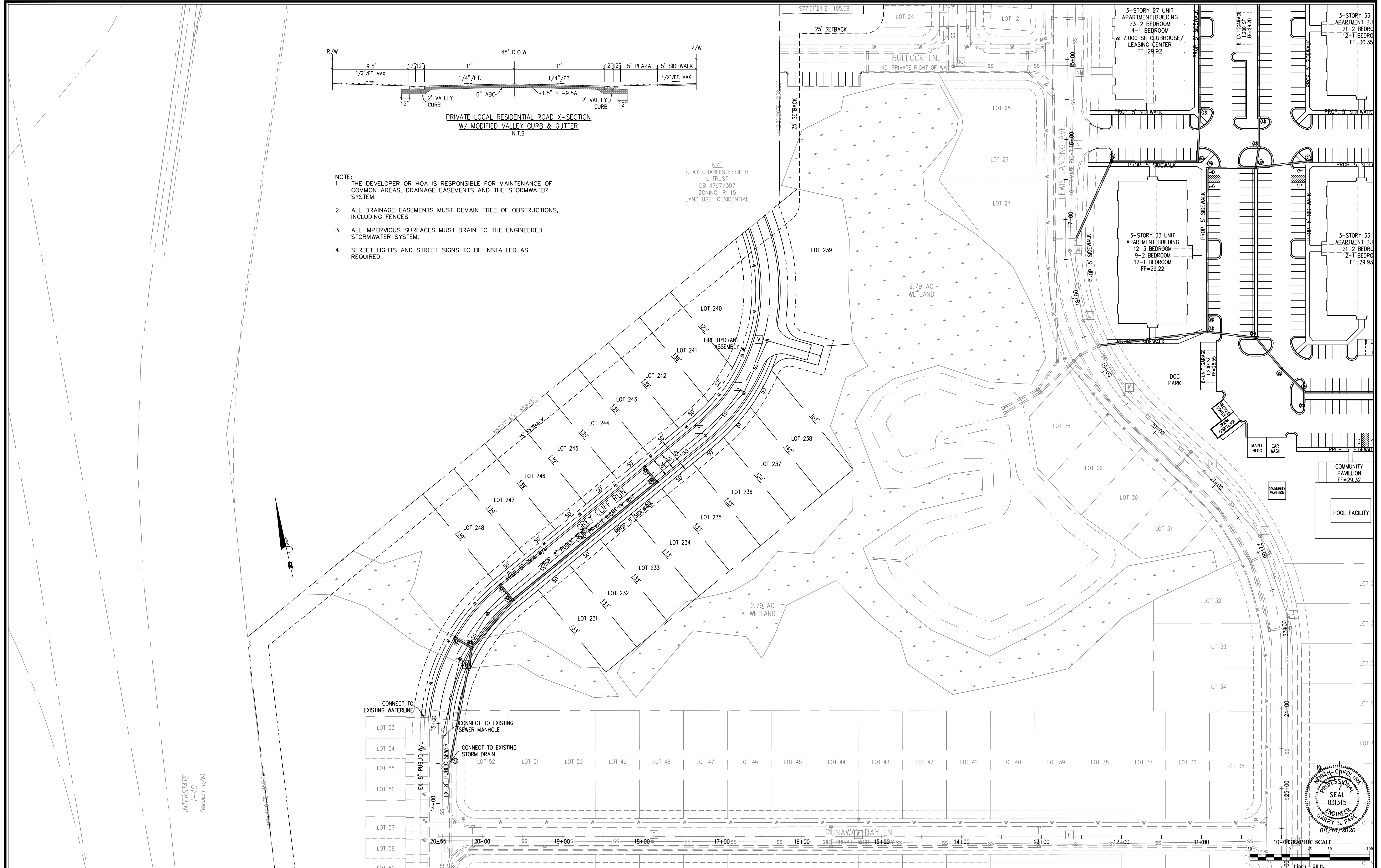
**GSP CONSULTING, PLLC
ENGINEERING**
6626 Gordon Road Unit C Wilmington, North Carolina 28411 tel: 910-442-7870 fax: 910-799-6659

Sheet No.
C-1



- NOTE:
1. THE DEVELOPER OR HOA IS RESPONSIBLE FOR MAINTENANCE OF COMMON AREAS, DRAINAGE EASEMENTS AND THE STORMWATER SYSTEM.
 2. ALL DRAINAGE EASEMENTS MUST REMAIN FREE OF OBSTRUCTIONS, INCLUDING FENCES.
 3. ALL IMPERVIOUS SURFACES MUST DRAIN TO THE ENGINEERED STORMWATER SYSTEM.
 4. STREET LIGHTS AND STREET SIGNS TO BE INSTALLED AS REQUIRED.

N/E
CLAY CHARLES ESSIE R
L TRUST
DB 4797/397
ZONING: R-15
LAND USE: RESIDENTIAL



No.	Revision	Date	By

Designer	GSP	Scale	1" = 50'
Drawn By	GSP	Date	December 2017
License #	P-0718	Job No.	2017-0002

**THE LANDING
AT LEWIS CREEK ESTATES**
Wilmington New Hanover County North Carolina

PRELIMINARY PLAN

PREPARED FOR:
McADAMS HOMES, LLC
6626-C GORDON ROAD
WILMINGTON, NC 28411
910-799-3006

GSP CONSULTING, PLLC
ENGINEERING
6626 Gordon Road Unit C Wilmington, North Carolina 28411 tel: 910-442-7870 fax: 910-799-6659

Sheet No.
C-2