

**SITE DATA:**  
 SITE AREA: + 1.15 ACRES  
 PARCEL ID: R03400-001-025-000  
 ZONED: I-2 HEAVY INDUSTRIAL  
 OWNER: DYTON BUILDERS, LLC  
 607 SUMNER AVENUE  
 CAROLINA BEACH, NC 28428

**DIMENSION REQUIREMENTS:**  
 FRONT SETBACK: 50' MINIMUM  
 SIDE SETBACK: N/A  
 REAR SETBACK: N/A  
 BLDG HEIGHT, MAX: NONE

**STREET YARD CALCULATIONS:**

REQUIRED	PROVIDED
232 LF OF FRONTAGE - 30 LF ENTRANCE = 202 LF	
202 LF X 25 F = 5,050 SF	
1 TREE / 600 SF =	8 TREES
6 SHRUBS 12" H / 600 SF =	50 SHRUBS

**INTERIOR LANDSCAPE CALCULATIONS:**

REQUIRED	PROVIDED
8% OF GROSS PAVED AREA	
10,720 SF x (0.08) LANDSCAPE =	857 SF
1 TREE / 144 SF =	6
1,478 SF / 144 SF =	10

**OVERALL SITE TREE PLANTING REQUIREMENTS:**

REQUIRED	PROVIDED
1.15 AC X (15) TREES / AC =	17
STREET YARD TREES:	8
INTERIOR TREES:	10
TOTAL TREES:	18

**FOUNDATION PLANTINGS:**

REQUIRED	PROVIDED
MIN. 12% OF BLDG FACE:	
(14'H x 80') / 0.12 =	135 SF
	867 SF

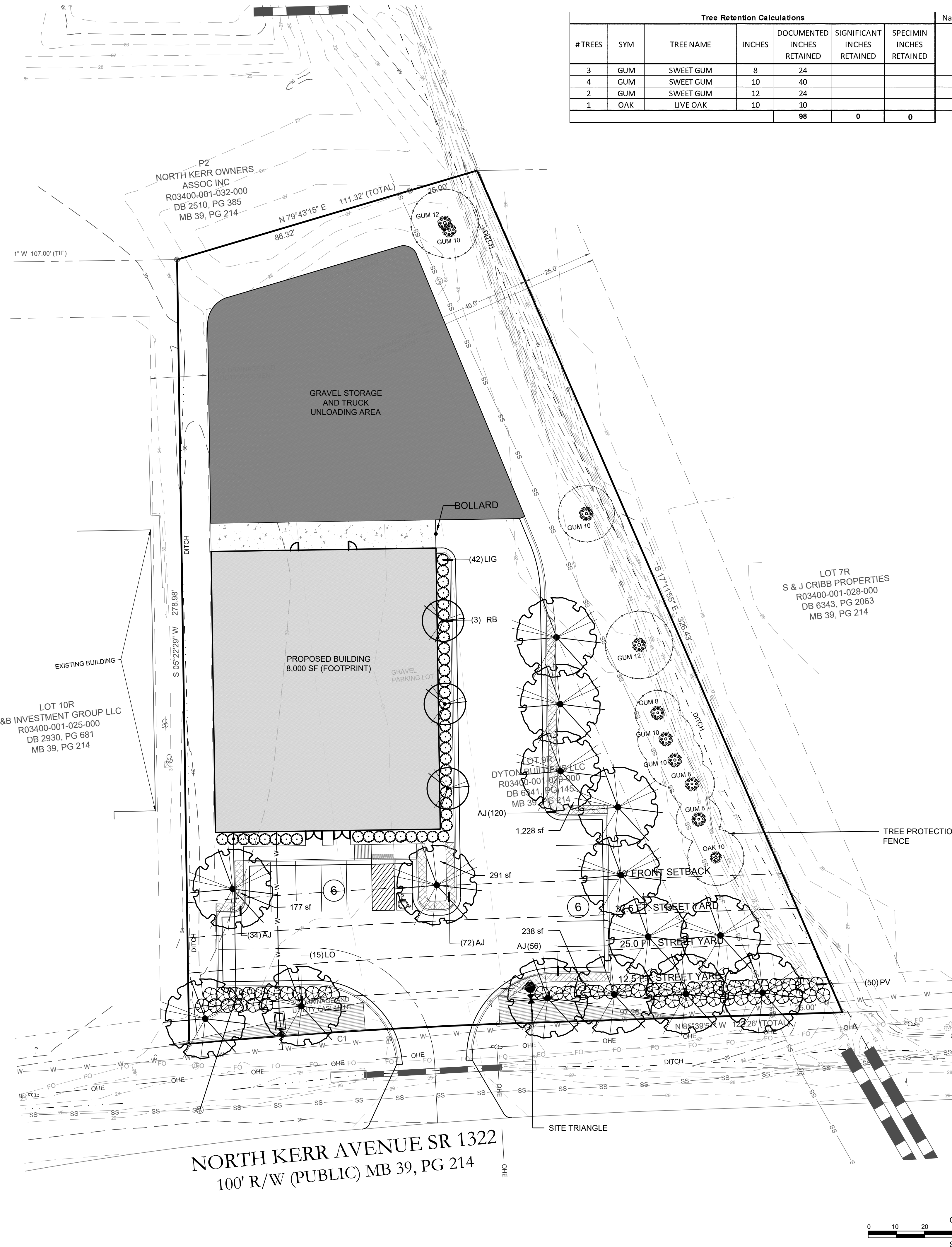
**BUFFER YARDS**  
 BUFFER YARDS NOT REQUIRED

**SCREENING**  
 SCREENING NOT REQUIRED

- MITIGATION NOTES**
- SIGNIFICANT TREES SHALL BE MITIGATED ACCORDING TO THE NEW HANOVER COUNTY ORDINANCE. TREES THAT REQUIRE MITIGATION INCLUDE:  
 ANY 24" DIAMETER OR LARGER CONIFER TREE  
 ANY 18" DIAMETER OR LARGER LONG LEAF PINE, POND CYPRESS, BALD CYPRESS AND HARDWOOD TREE  
 ANY 8" DIAMETER OR LARGER FLOWERING TREE
  - SEE MITIGATION CALCULATIONS

**LEGEND:**  
 TREE TO REMAIN

CANOPY TREES	CODE	QTY	BOTANICAL / COMMON NAME	SIZE
	LO	15	Quercus virginiana Southern Live Oak	8' - 10' H
UNDERSTORY TREE	CODE	QTY	BOTANICAL / COMMON NAME	SIZE
	RB	3	Cercis canadensis 'Forest Pansy'™ Forest Pansy Redbud	7'-8' H
SHRUBS	CODE	QTY	BOTANICAL / COMMON NAME	CONTAINER
	LIG	42	Ligustrum japonicum 'East Bay' East Bay Privet	3 gal / 12" ht
	PV	50	Pittosporum t. 'Variegata' Variegated Mock Orange	3 gal / 12" ht
GROUND COVERS	CODE	QTY	BOTANICAL / COMMON NAME	CONT
	AJ	282	Trachelospermum a. 'Asiatic' Asiatic Jasmine	1 gal



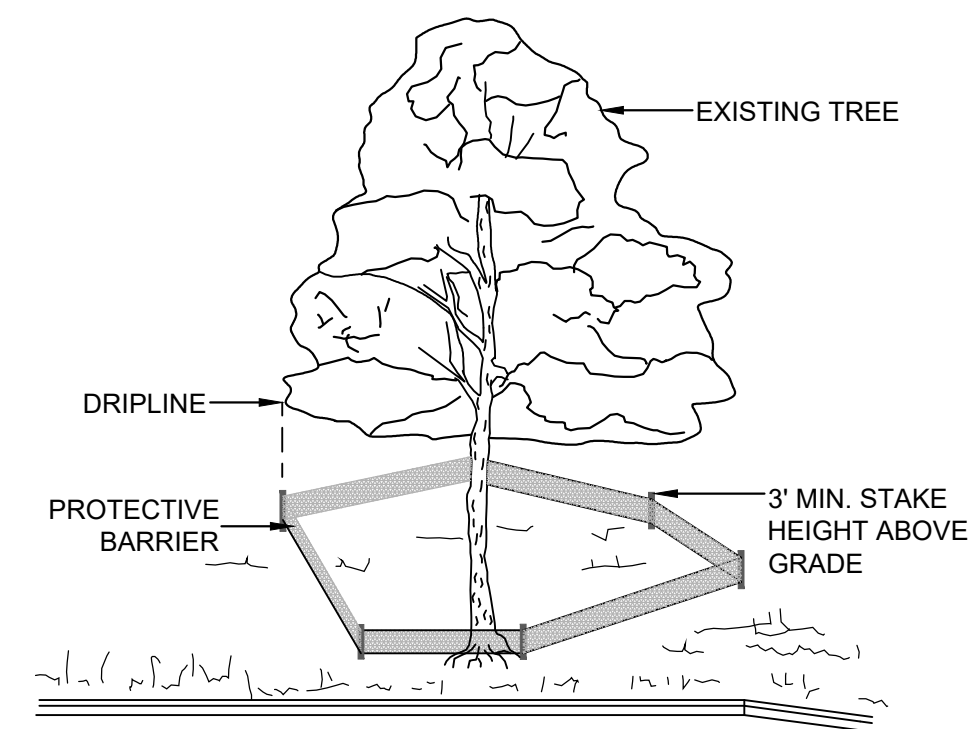
Tree Retention Calculations							Native	Invasive
# TREES	SYM	TREE NAME	INCHES	DOCUMENTED INCHES RETAINED	SIGNIFICANT INCHES RETAINED	SPECIMIN INCHES RETAINED	Y	
3	GUM	SWEET GUM	8	24				
4	GUM	SWEET GUM	10	40				
2	GUM	SWEET GUM	12	24				
1	OAK	LIVE OAK	10	10			Y	
				<b>98</b>	<b>0</b>	<b>0</b>		

Significant	Removed	Minimum DBH	Aggregate Inches at DBH
Dogwood, Magnolias, Native Flowering Trees, and American Hollies		8 inches	0
Long Leaf Pine, Pond Cypress, Bald Cypress, and Hardwoods		18 inches	0
Other Conifers		24 inches	0
Specimen	Removed	Minimum DBH	Aggregate Inches at DBH
Live Oak		36 inches	0
Pond Cypress		36 inches	0
Bald Cypress		36 inches	0
Required Mitigation Inches for Significant Trees:			0
Required Mitigation Inches for Specimen Trees:			0
Total Required Mitigation Inches:			0

Native	Retained	DBH	Aggregate Inches at DBH
Unregulated Trees		2 inches (min)	0
Dogwoods and American Hollies		4-7 inches	0
Hardwoods		8-17 inches	10
Other Native Conifers		12-23 inches	0
Trees Growing in Mature Native Forest		Aggregate Inches	0
Trees Growing in Stands or Natural Clusters		Aggregate Inches	0

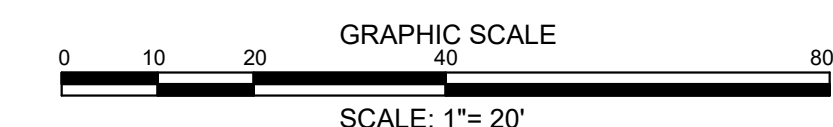
Non-Native	Retained	DBH	Aggregate Inches at DBH
Unregulated Trees		2 inches (min)	0
Non-Native Hardwoods		8-17 inches	88
Non-Native Conifers		12-23 inches	0
Trees Growing in Stands or Clusters		Aggregate Inches	0
Total Native Inches:			10
Total Non-Native Inches:			88
Total Retained Inches:			98

Total Native Inches Retained:	10	
Total Non-Native Inches Retained:	88	
		Native Inches
		Non-Native Inches
Significant Tree Removal Mitigation:	0	0
Specimen Tree Removal Mitigation:	0	n/a
Remaining retained inches:	10	88
Required Significant Tree Mitigation Inches:	0	
Provided Mitigation Inches:	0	
Remaining:	0	
Required Specimen Trees Mitigation Inches:	0	
Provided Mitigation Inches:	0	
Remaining:	0	



**NOTE:**  
 TREES TO BE SAVED WILL BE CLEARLY MARKED PRIOR TO CONSTRUCTION AND A PROTECTIVE BARRIER IS TO BE INSTALLED AT THE DRIPLINE. DRIP LINE - THE AREA OF SOIL DIRECTLY BENEATH THE TREE EXTENDING OUT TO THE TIPS OF THE OUTERMOST BRANCHES.

**METHOD OF TREE PROTECTION DURING CONSTRUCTION**  
 NOT TO SCALE



FINAL DESIGN - NOT RELEASED FOR CONSTRUCTION

PRELIMINARY LANDSCAPE PLAN AND TREE MITIGATION  
 3012 N KERR AVE.  
 NEW HANOVER COUNTY  
 NORTH CAROLINA

PROJECT STATUS:  
 CONCEPTUAL LAYOUT:  
 FINAL DESIGN:  
 RELEASED FOR CONST:  
 DRAWING INFORMATION:  
 DATE: 08/09/24  
 SCALE: 1" = 20'  
 C.W.  
 C.W.  
 C.W.  
 C.W.

SEAL

L-1.0

PEI JOB#: 20389.PE

REVISIONS:  
 PER ARCHITECT COMMENTS 01/07/2021

CLIENT INFORMATION:  
 DYTON BUILDERS LLC  
 607 SUMNER AVENUE  
 CAROLINA BEACH, NC 28428

PARAMOUNT ENGINEERING  
 122 Cinema Drive  
 Wilmington, North Carolina 28403  
 (910) 791-6707 (O) (910) 791-6760 (F)  
 NC License #: C-2846